

**Simulation and Verification Experiment of Radiation Sound Pressure Waveform from Finite Aperture Piezoelectric Transducer**

**放射音圧波形シミュレーションとその検証実験**

Yoshio Udagawa<sup>1†</sup>, and Akira Yamada<sup>2</sup>

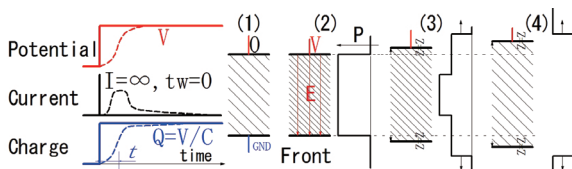
(<sup>1</sup> Imaging Supersonic Laboratories ; Co.,Ltd. <sup>2</sup> Grad.Bio-Appl.Sys. Eng., Tokyo Univ. of A&T);  
宇田川義夫<sup>1†</sup>, 山田 晃<sup>2</sup>(<sup>1</sup>アイ・エス・エル, <sup>2</sup>東京農工大学 院生物シ応用)

**1. Introduction**

Wave form shape from a finite aperture piezoelectric transducer used in non-destructive testing and medical ultrasound is important. Because it affects to signal noise ratio. Transducer and pulser designers pay attention to the wave form shape. In this report we show basic theory, pictures captured by photo elastic phenomenon and hydrophone of generating wave form by finite aperture piezoelectric transducer.

**2. Theory of wave form from transducer**

We apply control theory considering the waveform of the emitted sound from the finite aperture piezoelectric element. As knowing the wave form response by a step-function shape applied potential, we know the wave form by any shape applied potential. Fig.1 LEFT shows a applied step-function potential. Piezoelectric element is almost same as a capacitor which stores energy by distortion. In ideal, the current flow into a capacitor by step-function potential is a middle shape. But in actual, a pulser and the element have internal resistance. Therefore current is similar as dotted line. The distortion of the



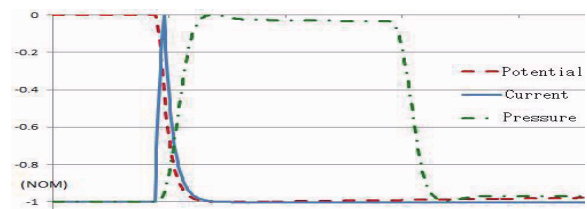
**Fig.1 LEFT:** Applied potential, Current and Charge, **RIGHT:** Sound from element

element is parallel to the charge on electrodes of the element shown as below. The charge duration is not so long. For example, a 0.5MHz 40mm diameter element have 1nF...5nF capacitor. Pulser output impedance is less than 20 ohm and pulser saturation current is larger than 10A. The Duration is smaller than 100ns. This is enough smaller time than element period. In micro, grain size of element is about 1um. The element is almost homogeneous. In short time after applied step-function potential, internal electric field is saturated and homogeneous pressure was generated in whole element. In this period, each part of the element does not move, because of Newton's first law (Fig.1(2)). Pressure propagates both directions (Fig.1(3)). This is proved by wave formula with constant pressure as initial condition. According to pressure propagation to outside, the both

side surfaces of the element move. When the acoustic impedance of element and the outside are same, rectangle shape pressure wave propagates (Fig.1(4)).

**3. Simulation**

Based on the above logic, a simulated wave form from element is shown Fig.2. We disregard the saturation property and rise time of pulser, but use internal resistor  $R_0$ . The element capacitor changed by internal pressure condition. But in simulation capacitor is constant as  $C_0$ .



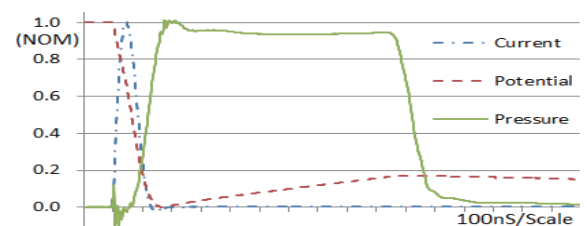
**Fig.2** Simulation in ideal condition of applied potential, current and generated pressure wave form.

Applied potential and current changes according to time constant to  $R_0 * C_0$  shown as Fig.2. Both slopes of output pressure is a little bit larger than the time constant  $R_0 * C_0$ .

**4. Measured waveform by pressure sensor**

We made a special transducer which has a thick backing material made by same ceramic material as the element. Measured potential, current and pressure wave as Fig.3. We used high frequency wide band transducer 20MHz 3mm diameter as pressure sensor. It was worked with high impedance (100Mohm) input amplifier. The amplifier works as same as a charge amplifier. We used a long duration spike pulser as a step function pulser. The output pressure waveform in Fig.3 is very close to Fig.2. Differences from Fig.2 are;

- 1) current is saturated by FET characteristic (about 30A)
- 2) Falling slope of potential is not time constant curve,



**Fig.3** 0.5MHz 40mmDia high damped transducer and exciting by spike pulser through 20mm borosilicate glass

but almost linear. This is caused by current saturation.  
 3) We can observe a kick back potential form element. This is triangle shape. The spike puser is disconnected from a transducer after charge finished. The load of element is high impedance. We can see potential as receiving mode of piezoelectric element.

### 5. Measured by Photo Elastic Phenomenon

Fig.4 is a block diagram of Ultrasonic Visualization System (UVS) including Ultrasonic Laser Profiler and measured samples. This system is using photo-elastic phenomenon. Observe about 40x30mm or smaller area at glance. Observed intensity by CCD with Gamma 1 is

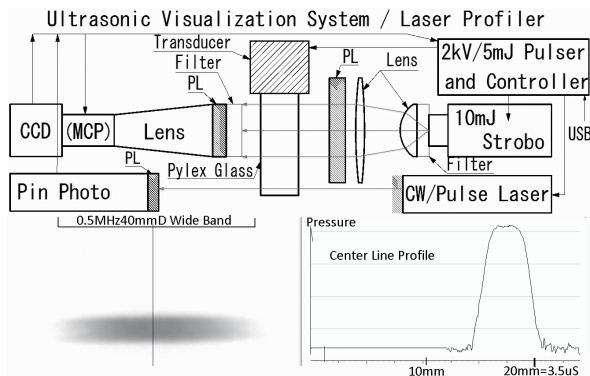


Fig.4 Ultrasonic Visualization System (UVS)

proportional to the square of the stress. Sound pressure is the square root of intensity. The system has a distortions of a lens system (one example center is bright and dark ambient). This system uses photo elastic phenomenon; but, at the same time light ray also deflects by stress. The glass without stress and only atmospheric pressure surrounding it. Commercial transducers are designed basically start with positive sound pressure by applying negative voltage. In above condition we observe nearly rectangular pressure waveform with the same special transducer.

### 6. Layers effect

Transducer made by many layers; piezoelectric crystal, electrode, protect layer and glue. These make distortion of wave form. We observe such signal on Screen of oscilloscope or Flaw detector.

We made simulation software of multi-layer reflection and combined to the simulation software stated above. Fig.5 LEFT shows the result. The width of each step are same period of round trip layer thickness. We use several thickness of PVC sheet and observed through pressure wave with same transducer mentioned above. The result

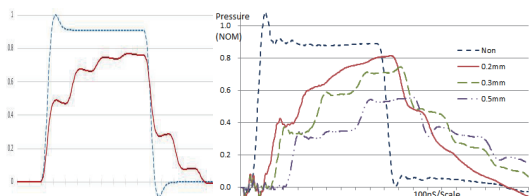


Fig.5 Effect of Layers

is shown Fig.5 RIGHT Simulation and experiment are similar (red lines). When we use thinner PCV we can observe just smooth integration curve for rectangular pressure wave form. We can see rather large overshoot on pressure wave form of Fig.5 RIGHT. This is ringing of lead inductance and element capacitor.

### 7. Difference by Pulser type

There are many type of pulser to excite piezoelectric element; spike, square, burst pulser etc. Spike pulser is almost same as step-function pulser when the duration is enough long. The square and burst pulses are just super

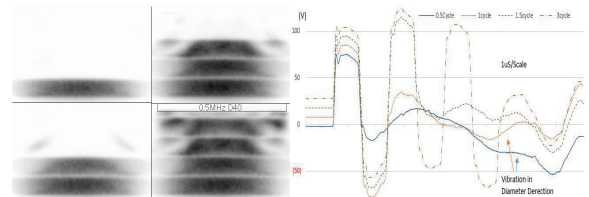


Fig.6 Step, Square, Burst pulser LEFT; by UVS RIGHT by pressure sensor

composition of positive and negative step-function pulser. Fig.6 shows wave form of sound by different cycle excitation captured by UVS and measured by pressure sensor. A half cycle excitation or step-function generate half pressure wave. A cycle excitation or square pulser make positive and negative rectangular pressure wave. Be care, one atmosphere make brightness change between negative and positive pressure.

We observe very low frequency wave in curve measured by the pressure sensor. This is wave propagate diameter direction of piezoelectric element. The wave strength is depending on piezoelectric material itself, backing material, electric pole thickness, protect layer material and thickness and/or surrounded material of the elements. These arrangement is a knowhow of transducer maker.

We observe non-flatness of pressure on Fig.6 LEFT. These are Beam Edge Diffusion waves which generated by each beam pressure slope on the both sides. This strength is caused by also similar combination mentioned above.

### 8. Conclusion

Basically piezoelectric element generate rectangular shape pressure wave ideally and trapezoidum shape actually. The slope of trapezoidum is similar to  $C_0 \cdot R_0$  time constant. Layers make big distortion of wave form. Square or burst exciting is just super composition of step-function exciting.

### Reference

[1] Y.Udagawa: *Introduction to Ultrasonic Wave Technique – Transducer, Pulser, Receiver and Device-*, Nikkan Kogyo Shimbun Ltd, Tokyo (2010)  
 [2] Y.Udagawa and Guy Reim: *Wave Propagation Simulation in Coarse Grain (attenuative) Materials*] IUS October 2012